



From Adaptive Testing to Adaptive Learning

By Hua-Hua Chang

My research interests are broad, encompassing both theoretical development and applied methodologies in psychometrics, including Computerized Adaptive Testing (CAT), Differential Item Functioning, Cognitive Diagnosis, and asymptotic properties in Item Response Theory. Some of my most important statistical work is aimed at improving and developing CAT, an important innovation in educational and psychological testing that enables the examiner to obtain precise estimates of each examinee's latent trait being measured in a minimum amount of time.

in the region of the estimated proficiency but nevertheless provided information over a broader range of proficiencies. This idea of maximizing global information over a plausible distribution of proficiency solved both problems at once. Less discriminating items became valuable at the beginning of a test and would be effectively utilized, and highly discriminating items were favored later in the test, when proficiency was estimated more accurately.

In collaboration with my colleagues, we developed an array of techniques to combine Cognitive Diagnosis with CAT (CD-CAT). Our NSF funded research showed promising

program, which has enabled HSK test developers to automatically assemble a large number of parallel test forms at once to cater to the increasing demand of HSK administration around the world. And in 2015-16, the research group has developed a preliminary version of the web-based computerized adaptive HSK level 4 exam. Such a web-based CAT system enables tailored selection of items for different test-takers, and it is expected to promote the efficiency of the HSK test administration by reducing test length, providing more standardized service, and increasing the easiness of test administration and data collection. By delivering the web-based CAT system, this campus is anticipated to become the host and the support hub for the web-based HSK test in North America.

My research has an important impact on the developments and applications of CAT. CAT is now not only used in highly influential tests such as GMAT but also in large-scale educational assessments and surveys, such as the Early Childhood Longitudinal Study, and, beyond the domain of education, in medical diagnosis and the measurement of mental health. A lot of new research has stemmed in recent years to address issues and challenges of implementing CAT in a range of fields. CAT could make a substantial influence on the functioning of society by affecting how people are selected, classified, and diagnosed; CAT research will lead to better assessment, and will hence benefit society. ♦

Professor Chang has been on the list of Teachers Ranked as Excellent at Illinois every year since 2008. He is the Editor-in-Chief of Applied Psychological Measurement, past President of the Psychometric Society (2012-2013), and a Fellow of American Educational Research Association. Dr. Chang currently serves as the director of the Confucius Institute at Illinois, and he was most recently awarded the Changjiang Scholar Chair Professorship by the Ministry of Education of PR China.

Although the research on CD-CAT was originally inspired by the problems in K-12 accountability testing, it has great promise in web-based learning, and its findings may also be beneficial to other domains such as quality of life measurement, patient report outcome, media and information literacy measurement, medical diagnosis, and the measurement of mental health, etc. The conceptualization of CD-CAT could widely influence public understanding of efficient, formative assessment.

The trick is to have a calibrated item bank and an algorithm for selecting the next item for each examinee given a sequence of previous responses. Whereas the traditional algorithm suggested choosing an item that is close to the examinee's estimated proficiency and sharply discriminates examinees in that small proficiency range, I noticed two flaws with that approach. First, sharply discriminating items would always be chosen first, and consequently, many high quality items of appropriate difficulty but less discriminating turned out to be rarely, if ever, used. Cost of item development averages more than \$1,000 per item; therefore, this was a waste and made it easier to cheat on an exam (because the effective size of the item pool was severely shrunk). And second, at the beginning of the exam, when the examinee's proficiency was not accurately estimated, the algorithm selects questions that are highly discriminating in an ability range that might be far from the examinee's true ability.

I had a simple, powerful and ingenious solution. I utilized a different information measure which used items whose discriminations were lower

results concerning utilizing CAT to help low-performing students in an undergraduate physics course, thereby improving retention rates in the STEM field. A new NSF funded project will focus on detection of learning in Cognitive Diagnosis. Indeed, a growing body of evidence shows that adaptive testing has enormous potential to revolutionize classroom assessment and greatly facilitate individualized learning.

Supported by Chinese Testing Int'l (CTI), Beijing, China, I am currently leading a group of graduate students on developing cutting-edge techniques to support the Chinese language proficiency test (HSK), the world's second largest language proficiency exam. In 2014, the research group successfully delivered a computerized automated test assembly



Professor Hua-Hua Chang is an alumnus of LAS (PhD '92, Statistics). He is a practitioner-turned professor. Prior to moving to academia in 2001, he worked six years at the Educational Testing Service in Princeton, NJ, and three were at the National Board of Medical Examiners in Philadelphia, PA. His research efforts often yielded immediate and practical benefits. For example, he and Mazzeo proved the unique correspondence between item response function and item category response functions, which built a statistical foundation for the "poly-SIBTEST" software package. The package has been widely used by many organizations today to identify potentially biased test items. ♦

PSYCHOLOGY TIMES

Psychology Times is a University of Illinois Department of Psychology publication produced by the College of Liberal Arts & Sciences Office of Communications and Marketing. Photos by Aron Barbey, Beckman Institute, Kelly Burger, Hua-Hua Chang, Melissa Coffel, College of Liberal Arts & Sciences, Deborah Cronin, Kara Federmeier, Dan Hyde, Dahyeon Kang, Larry Kanfer, Tom Kwapil, Heidemarie Laurent, Sean Laurent, Alejandro Lleras, Yara Mekawi, Andrea Miller, Daniel Newman, Sepideh Friberg Sadaghiani, Chadly Stern, Daniel Storage, Thompson-McClellan Photography, Inc., United States Olympic Committee, and Bill Wiegand Suggestions for future issues should be directed to:

Cheryl Berger, Editor
Department of Psychology
University of Illinois at Urbana-Champaign
603 East Daniel
Champaign, IL 61820
Phone: (217) 333-3429
Fax: (217) 244-5876

For more information on the department, visit our website at: psychology.illinois.edu



College of
**Liberal
Arts &
Sciences**

ias.illinois.edu

From the Department Head



Greetings! Fall 2016 started with a splash—literally, as we discovered a flood caused by a failed air-conditioning coil. Fortunately, it was discovered quickly and we made rapid progress in cleaning up the floors in the building that were affected and we were ready the very next day for the first day of classes.

There have been several changes at the University since our last newsletter, including the departure of our Dean and Acting Chancellor, Barbara Wilson, who has become Executive Vice President and Vice President for Academic Affairs; and Robert Jones is our new Chancellor. Executive Associate Dean Brian Ross, a member of our department, has left to join an education start-up in San Francisco. We will miss his leadership but wish him the best and look forward to working with the new Dean, Feng Sheng Hu, and Interim Associate Dean, David Tewksbury.

We welcomed seven new faculty this fall: Fred and Ruby Kanfer Professor Benjamin Hankin (Clinical/Community), Professor Tom Kwapil (Clinical/Community), Associate Professor Aron Barbey (Cognitive Neuroscience), Assistant Professors Heidemarie Laurent, Sean Laurent (Clinical/Community), Chadly Stern (Personality-Social), and Visiting Professor Andrea Miller (Social-Personality). You can read more about these faculty on pages 9, 12-13.

We congratulate our newly promoted faculty: Nicole Allen, Alejandro Lleras, and Dan Newman to Full Professor, and Florin Dolcos and Carla Hunter to Associate Professor. Professor Nicole Allen will serve as our new Associate Head and Director of Graduate Studies. We thank Frances Wang for her diligent service in this role the past couple of years.

Although the budget situation is still uncertain at a state level, and we have experienced an overall reduction in state funds, we anticipate that our funding level will be stable this year. Our department is operating efficiently and we have lots of exciting new initiatives in the works. We are very close to launching a new campus-wide minor for Psychology and have submitted our plans for a new Master's Program in Psychological Science. A new online Introductory Psychology course launched this winter break and we are planning to increase enrollment in our existing online summer Introductory Psychology course.

The new Social and Behavioral Sciences Research Initiative (SBSRI) headed by Professor Brent Roberts has been given a home in our building and is getting off the ground. For more information and a nice shout out to our department see: go.ias.illinois.edu/breakingdownbarriers.

Our department continues to be in the top ten psychology programs according to U.S. News and World Report and we were recently ranked among the top twenty most affordable doctoral degree programs in psychology. Read more at: www.online-psychology-degrees.org/best/affordable-doctoral-psychology-2016/

This issue of *Psychology Times* highlights our outstanding alumni including Cathie and L. Gene Lemon and Dr. John Shustitzky, recipients of the Department's 2016 Distinguished Alumni Award; Dr. Elizabeth Pieroth, recipient of the College of LAS Alumni Achievement Award; and Kelly Burger, a recent graduate and the first Illini to represent Oscar Mayer and drive their iconic "Wienermobile" across the country.

We deeply appreciate the commitment of the Psychology Alumni Board to support our undergraduate and graduate students through the establishment of the Shape the Future Today Fund. The fund supports undergraduate students exploring careers and/or have secured an unpaid summer internship, as well as graduate conference travel awards. The alumni board has also developed the very successful First Friday Alumni Panels, Leadership and Career Development Workshop, and recently organized our first information webinar. Due to the generosity of donors Cathie and L. Gene Lemon and Lyle Lanier, Jr., we will also continue to offer Lanier Awards to faculty which can be applied for to support either travel or research. The department is grateful for the generous alumni who have created scholarships and awards to support students who have demonstrated outstanding research and academic achievements, and can also benefit from financial support to continue their studies. You can view all of the scholarship and award recipients on pages 14-18.

This issue also features the research of Professor Hua-Hua Chang; honors and awards to faculty, staff, and students in the last year; and departures and arrivals.

I hope that you enjoy reading through the 2016 winter issue of *Psychology Times*. I am sure you will agree with me that Psychology is a dynamic and innovative department! ♦

Wendy Heller

Wendy Heller
Professor and Head

Psychology's Hotdogger

By Kelly Burger

I graduated from the University of Illinois May 2015 with a double major in Psychology and English, and a minor in Secondary Education.

As a "hotdogger" I represented Oscar Mayer and drove the iconic Wienermobile, the 27-foot long hot dog on wheels, across the country for an entire year. Thousands of college graduates apply for the Wienermobile spokesperson job every year, but only twelve "lucky dogs" are chosen. More people have gone to space than have driven the famed Oscar Mayer Wienermobile!

I started my tour across the "Hot Dog Highways of America" in June 2015 right after I graduated and by February 2016 I had already traveled to twenty-eight states.

Pride Parade



I traveled with a co-driver to a new city each week and we were given the opportunity to explore the hidden gems across America.

As a "hotdogger" I was responsible for covering a wide variety of events including parades, charitable functions, festivals, retail events and sporting events. I coordinated events, pitched and conducted media interviews, booked hotels, and engaged thousands of people a week. "Hotdoggers" essentially operate a public relations firm on wheels.

I am very thankful that I was able to receive such a well-rounded education at the University of Illinois that made me a standout candidate for this position. I "relish" every moment that I had with this job. I was so lucky to be doing such a fun and unconventional job right out of school and I want as many people to know about it as possible. It has truly been life changing for me and I am sure it could be the same for another lucky Illinois grad. Do you have strong communication skills and love to travel? Submit your application to Oscar Mayer for consideration (Deadline- January 31). ♦



Kelly Burger and co-driver on top of the "Bun Roof." Each year thousands of college graduates apply for twelve Oscar Mayer Wienermobile spokesperson openings and Kelly is the first Illini to hold this job.



On the road, Boise, Idaho.



Kelly meets Sid, the dog mayor of Austin, TX.

Distinguished Alumni Awards

Dr. John Shustitzky earned his BS degree in Psychology from the University of Illinois at Urbana-Champaign in 1973, and his MS 1975 and PhD 1979 in Counseling Psychology, also from the University of Illinois.

Dr. Shustitzky is Director of Applied Professional Practice/Director of Clinical Training, Clinical Psychology Doctoral Program, at the Chicago School of Professional Psychology and holds an appointment as Professor of Psychology. He has spent his career serving institutions of higher learning and community-based mental health and human services organizations.

Dr. Shustitzky serves as Co-Chair of the Illinois Mental Health Planning and Advisory Council and is a member of the Illinois Department of Human Services Advisory Council. He has been a member of the Psychology Alumni Advisory Board since its inception in 2008.

L. Gene and Cathie Lemon received a Distinguished Honorary Alumni Award from Professor and Head, Wendy Heller, at the department's annual awards program on Saturday, May 14, 2016.

L. Gene and Cathie Lemon, with Cathie's brother Lyle Lanier Jr., established the Lyle H. Lanier Fund in Psychology in memory of Cathie and Lyle's father, head of the Department of Psychology (1951-1959); Dean of the College of Liberal Arts and Sciences (1959-1960); and Provost of the Champaign-Urbana campus (1960-1972). In honor of his many contributions, the Department uses the funds annually for the Lanier Lecture Series that brings a distinguished psychologist to campus whose work

is of interest to the general campus and local community.

Cathie Lemon attended the University of Illinois at Urbana-Champaign and completed her BA in French from Salem College and a MA in Art History from Arizona State University. She spent her career with the Phoenix Art Museum.

Gene Lemon received a BS in Agriculture, Consumer & Environmental Sciences and a JD from the College of Law at the University of Illinois at Urbana-Champaign. He served in executive roles and as general counsel for several major corporations during his career. Gene and Cathie are lifetime members of the University of Illinois Presidents Council, and Cathie has served on Psychology's Alumni Advisory Board since 2008. ♦



L-R: Cathie Lemon, L. Gene Lemon, Professor and Head Wendy Heller, and Dr. John Shustitzky

Alumna Receives Top Award from College

Dr. Elizabeth Pieroth (BS '88) was one of five alumni selected to receive the 2016 LAS Alumni Achievement Award.

After leaving Illinois, Dr. Pieroth was awarded a PsyD in Clinical Psychology (APA approved) from the Illinois School of Professional Psychology (1997), and completed a postdoctoral fellowship in Neuropsychology

(APPCN approved) at the Henry Ford Health System (1998). She is an Illinois Licensed Clinical Psychologist and has board certification; Diplomate in Clinical Neuropsychology, and the American Board of Professional Psychology.

Dr. Pieroth was offered the opportunity to work with concussed athletes during her postdoctoral fellowship at the Henry Ford Health System. In 1997 the National Hockey League started a formalized concussion program and she began her work with professional athletes with the Detroit Red Wings. She returned to Chicago after the fellowship ended and focused her work on assessment and treatment of brain injury patients in the acute recovery stage. Dr. Pieroth also evaluated concussed athletes because there were not many clinicians trained in sports neuropsychology at the time. She became Board Certified in Clinical Neuropsychology as well. After a few years Dr. Pieroth began her own private practice in order to balance the demands of work and a family.

Through the years her practice became increasingly more focused on concussion and sports neuropsychology, including her official role as the concussion/head injury consultant to the Chicago Bears, Blackhawks, White Sox, Fire and Northwestern University. However, her practice has always consisted mostly of assessing youth athletes with concussion from across the state of Illinois, as well as northwest Indiana and southern Wisconsin. A significant focus of her practice has also been dedicated to providing education to those involved in youth sports, including players, parents, coaches, teachers and healthcare providers.

In July 2012 Dr. Pieroth joined NorthShore University HealthSystem as the Associate Director of their Sports Concussion Program. She is on the Board of Directors of the Brain Injury Association of Illinois to support their work with brain injured patients and their families. She is also on the National Advisory Committee for USA Football's Heads Up Program, which is designed to provide health education to the youth football community and reduce injuries in football.

Dr. Pieroth is a founding member of the Sports Neuropsychology Society (SNS). SNS was formed to help increase the number of neuropsychologists appropriately trained in sports concussion. She has written on neuropsychological assessment of concussion and she is involved in research on concussion in sports.

Read the full article online at go.las.illinois.edu/pieroth16. ♦

"I fondly recall my time at Illinois and my fortunate introduction to the combination of psychology and medicine, which laid the groundwork for my career."

Psychology Alumni Advisory Board Events



The Psychology Alumni Advisory Board organized the department's first information webinar on Thursday, September 15.

Professor Wendy Heller gave a brief update on the changes in campus and department leadership, new faculty in the department, and how State budgetary issues are impacting the department and College of LAS. She also talked about new department

initiatives, including the Social and Behavioral Sciences Research Initiative (SBSRI), and the development of a new Master's degree in Psychological Science.

Professors Howard Berenbaum and Florin Dolcos, and Christian Williams, a clinical/community graduate student and veteran, discussed the research, *Socio-cognitive Training and Resources in Veterans in Higher Education (STRIVE)*, they are conducting in collaboration with the Chez Family Foundation Center

for Wounded Veterans in Higher Education. The collaboration provides the opportunity to conduct basic and applied research, and also offers a doctoral student practicum.

The Vice President of the Alumni Advisory Board, Carrie Grady, provided the background and mission of the board, notable achievements since its inception in 2008, and ways to get involved in board activities.

Contact Cheryl Berger if you are interested in becoming involved with the department and alumni advisory board activities. ♦

There are approximately 375 veterans enrolled at the University of Illinois at Urbana-Champaign, and about 20% have a disabling condition. Some of the issues the veterans struggle with are PTSD, depression, anxiety, substance abuse, and insomnia. There are additional challenges faced by student veterans such as learning to manage their disabilities, fitting into campus as a more mature student, and how to develop career goals after leaving the military, etc.

Psychology's New Alumni Advisory Board Members



The Department of Psychology is pleased to announce that Angela Flanagan, Lauren Hays, Ruchika Prakash, the Honorable Robert Villa, and Michael Walker (L-R) have joined Psychology's Alumni Advisory Board. Flanagan is an Account Manager at Travelers Insurance; Hays is the Human Resource Director at the Lincoln Behavioral Health Center; Prakash is an Assistant Professor in the Department of Psychology at Ohio State University; Villa is an Associate Judge in Illinois' Sixteenth Judicial Circuit Court, and Walker is an Executive Research Scientist at the College Board. ♦

Psychology Alumni Advisory Board Travel Award



Daniel Storage

"These funds helped make my conference travel possible this year. I knew that I simply had to go to the annual meeting for the Society for Personality and Social Psychology (SPSP) conference, considering first that it is my favorite conference to attend and second that I had two presentations at the conference.

At SPSP I met with several widely renowned "big wigs" in our field who not only provided invaluable feedback on my studies but also brainstormed ideas for next steps in future studies. Since that time and thanks to this feedback, I have made significantly more progress on the two projects that I presented on had I not attended the conference.

All of this would not have been possible without the generous gift of the Alumni Advisory Board. I would like to extend a sincere thank you for providing the graduate students in the department with the opportunity to receive these funds. Opportunities such as these, while generally few and far between, play a large role in helping us navigate the financial difficulties of progressing through graduate school."

Read more about the student recipients at: www.psychology.illinois.edu/giving/why/GradTravelAward2015.aspx

Learn how the Shape the Future Today Fund supports the educational experience of psychology students: www.psychology.illinois.edu/giving/shape/ ♦

Professional Development Award Recipients

Your donations to the Shape the Future Today Fund have made it possible to help support undergraduate students in unpaid internships through the *Alumni Professional Development Award*.

2016 Summer Award Recipients

Allison Cho had an internship in the Country Support Unit (CSU) of WHO WPRO.

"I hope to learn more about the workings of health administration so I can apply it to my ultimate goal of hospital administration. I look forward to learning about the policies and procedures that go into improving the effectiveness and efficiency of an entity's contribution to health development. I am extremely grateful that this award has assisted me in my first opportunity to get a hands-on experience in the health administration field, providing me years of sophisticated professional development and personal growth."



Maryoli Rojas had two summer internship experiences: Child Life intern at Chicago's Children Advocacy Center, and Residential intern at Children's Home + Aid, Rice Child + Family Center.

"Both internships will help me to learn to become an advocate for children who have undergone abuse and neglect, while also helping the children heal. Being awarded the Professional Development Award will be of tremendous help as both internships, each of 18-20 hours, do not allow me to be employed."

For more information about the *Shape the Future Today Fund*: www.psychology.illinois.edu/giving/shape/

For more information about the 2016 summer internship recipients: www.psychology.illinois.edu/giving/why/AlumAwardWin2016.aspx ♦



Laura Bolton Research Development Award



Laura and Russell Bolton

The Department of Psychology would like to thank Dr. Laura Bolton (BS '66) and her husband, Dr. Russell Bolton (BS '55, MS '59, PhD '68 Ceramic Engineering, Illinois), for establishing the Laura Bolton Research Development Award. The award provides financial support to qualified undergraduate psychology students who are conducting summer research in a psychology lab on campus.

2016 Summer Award Recipients



Melissa Coffel
Cognition and Brain Lab

Melissa received training on the intricacies of Electroencephalogram (EEG) equipment and Event Related Potential (ERP) components in psycholinguistic studies that involved older adult subjects.

"I would like for my undergraduate thesis to be on language comprehension in aging so my direct role in this project over the summer has provided for essential

training experiences to prepare me for my goal to become an independent researcher. Your gift has also inspired me to continue to keep giving back to my community as I hope to develop a research award someday as well."



Dahyeon Kang
Alcohol Research Lab

Dahyeon worked on a meta-analysis project with Assistant Professor Catharine Fairbairn. The research will be presented at the Society for Personality and Social Psychology conference next year. The meta-analysis is about the relationship between attachment styles and substance abuse in longitudinal studies.

"I am looking forward to further develop as a researcher through this summer experience as it is my career goal to pursue a doctorate degree in clinical psychology. I am graduating one year early, and I am going to apply for graduate schools this fall. So this summer period is very important for me, and I am again very grateful that I do not have to worry about my living costs in Champaign during this summer. I hope one day I will be able to help students achieve their goals just as you have helped me." ♦

For more information about the award: http://www.psychology.illinois.edu/undergrad/opportunities/awards/More_Awards.aspx

2016 Award Recipients: http://www.psychology.illinois.edu/undergrad/opportunities/awards/Bolton_Award_Recipients_2016.aspx

Alumni Share Advice

Thirty-four Psychology alumni came back to campus on Monday, February 29, 2016 to offer students insight on how a degree in Psychology can prepare them for a future career. Four of the alumni, Alicia Canario, Susan Keller, Gregory Kyrouac, and The Honorable Robert Villa participated in an hour-long panel discussion. The alumni shared information about their career paths and experiences followed by a question and answer session. Students had the opportunity to meet one-on-one with alumni from 5-6:30 p.m. in the Psychology Atrium. The event is special for the students as well as the participating alumni. ♦

"What I like most about the U of I is the amount of opportunities students get to network and meet incredible people that were once in our shoes. I enjoyed Psychology's Career Night very much."

— *Rafaella Stifelmann, sophomore*



Students at Q & A portion of alumni panel discussion



Panelists (L-R): Susan Keller, The Honorable Robert Villa, Alicia Canario, Gregory Kyrouac



Beth Rom-Rymer



(L-R) Susan Keller and Ronald Rothschild

2016 Career Information Night Alumni Participants

Bradley Axelrod (BS 1984, Psychology, University of Illinois; PhD 1990, Clinical Psychology, Wayne State University), Staff Psychologist, Neuropsychologist, Department of Veteran Affairs

Randy Bell (BS 1998, Psychology, University of Illinois), Aon, Product Owner, Global Knowledge Sharing

Eddie Bland IV (BS 2014, Psychology, University of Illinois), Sourcing Specialist, One Hope United

Krista Burdinie (BS 2012, Psychology & Communications, University of Illinois), Founder, HireYou-Consult; Talent Acquisition Specialist, Trustwave

Denise Dallmier Burger (BS 1993, Psychology; MA 1994, Human Resource Management, University of Illinois), Director of Human Resources, Horizon Hobby, Inc.

Alicia Canario (BS 1992, Psychology, University of Illinois; MS 1994, Human Resources, Loyola University), Senior Human Resources Manager, Integer/Lake Region Medical & Brannon HR Consulting, Owner

Kari Carpenter (BS 2014), Talent Acquisition Coordinator & Junior Recruiter, TwentyEighty

Laura Faynor-Ciha (BS 1983, Psychology, University of Illinois; MS 1985, Illinois State University; PhD 1995, Illinois Institute of Technology) Licensed Clinical Psychologist

Angela Flanagan (BS 2012, Psychology, University of Illinois), Account Manager, Travelers Insurance

Ben Ganellen (BS 2012, JD May 2016), University of Illinois; Post graduation, First-year Associate, Jones Day (Chicago office)

Carrie Grady (BS 1999, Psychology, University of Illinois; M Ed 2002, Community Counseling, Loyola University) Talent Business Advisor, Deloitte

Dale Hoke (BS 1973, Psychology, University of Illinois; MS 1974, Illinois State University), Adjunct Instructor of Psychology, Heartland Community College

Kari Hutjens (BS 2004, Psychology, University of Illinois; MS 2009, Counseling, Eastern Illinois University), Academic Advisor, Department of Economics, University of Illinois

Marios Karayannis (BS 1983, Psychology, University of Illinois; JD 1986, John Marshall Law School), Karayannis Law Offices, Owner

Susan Keller (BS 1992, Psychology, MSW 2014, University of Illinois), Clinical Counselor, University of Illinois Faculty/Staff Assistance Program

Loren Kuzuhara (BS 1985, Psychology, University of Illinois; MBA & PhD 1994, Business Administration, University of Wisconsin-Madison), Teaching Professor, University of Wisconsin-Madison

Michael Langendorf (BS 1975, MSW 1981, University of Illinois) School Social Worker (retired)

Leah Cohen Marks (BS 2011, Psychology, University of Illinois; PhD 2017, School Psychology, Illinois State University)

Debjeni Mukherjee (MA 1997, PhD 2000, University of Illinois), Director and Associate Professor, Donnelly Ethics Program, Rehabilitation Institute of Chicago and Northwestern University Feinberg School of Medicine

Larry Moller (BS 1974, Psychology & Economics; M.BA 1976, University of Illinois), President, Anthem Capital Group, Inc.

Susan Nelson (BA 1986, Psychology, University of Illinois; Master's in Child, Family, & Community Service 1999, University of Illinois at Springfield; MSW 2008, University of Illinois) Intercountry Adoption Coordinator, Illinois Department of Children & Family Services

Brad Perlstein (BS 1991; MBA 1992, University of Illinois), Vice President of Human Resources, Komatsu America Corporation

Keri Carter Pipkins (BS 1996, University of Illinois; MS Ed. 2000, Northern Illinois University) Associate Director, The Career Center, University of Illinois

Beth Rom-Rymer (MA 1980, PhD 1986, Clinical Psychology, University of Illinois) Rom-Rymer & Associates, Clinical and Forensic Practice

Ronald Rothschild (BS 1980; MSW 1984, University of Illinois), Psychotherapist, Private Practice

Blair Rowitz (BS 1989, Psychology, University of Illinois; MD 1993, Rush Medical College), Medical Practice-Bariatric/Trauma/General Surgery, Carle Physician Group

Nicole Shields (BS 2005, Psychology; MSW 2008, University of Illinois) School Social Worker, Pre-K-5th grade, Paxton-Buckley-Loda School District Unit 10

John Shustitzky (BS 1973, Psychology; MS 1975, PhD 1979, Counseling Psychology, University of Illinois); Licensed Psychologist; Director of Applied Professional Practice/Director of Clinical Training, Clinical Psychology Doctoral Program, Chicago School of Professional Psychology

Susan Silver (BS 1982, Psychology; MSW 1986, School of Social Work, University of Illinois) Supervising Probation Officer, U.S. Probation Office for the Central District of Illinois-Urbana Division

Nancy Suchomski (BS 1982, Psychology, University of Illinois), Director of Workplace Campaigns, United Way of Champaign

The Honorable Robert Villa (BS 1992, Psychology, University of Illinois; JD 1995, DePaul College of Law), Associate Judge, Illinois' Sixteenth Judicial Circuit Court

Casey Westover (BS 1998, Psychology, University of Illinois; JD 2001, Harvard Law School), Associate Partner, Sachnoff & Weaver Ltd. And Reed Smith LLP

Stephan Wiet (BS 1976, Psychology, University of Illinois; MS 1981, PhD 1983, Biopsychology, Rutgers University) Research Director of Consumer Sciences, McNeil Consumer Healthcare

You can view pictures from Career Information Night at: www.psychology.illinois.edu/alumni/news/gallery ♦

First Friday Alumni Panels



L-R: Sarah Scully, Azizi Marshall, Erica Stockman Hornthal, and Alyssa Steinke.

The Psychology Alumni Advisory Board provides a mentoring opportunity for undergraduates and alumni. The "First Friday" panels help current students explore career options. Alumni interested in participating in a panel should contact Cheryl Berger, Assistant Head for Alumni Relations, cberger@illinois.edu. ♦

Fall 2016/Spring 2017 Schedule

October 7, 2016 - Therapy (Music, Art, Dance, Drama)

Erica Stockman Hornthal, Owner, Chicago Dance Therapy
Azizi Marshall, Center for Creative Arts Therapy
Alyssa Steinke, Art Therapist and Qualified Mental Health professional
Sarah Scully, Stephen's Family YMCA (Champaign), Music Therapist

November 4, 2016 - Medicine

Jason Cacioppo '94, Plastic surgeon
James Leonard '77, President & CEO, The Carle Foundation, Urbana, IL
Blair Rowitz '89, Bariatric/Trauma/General Surgeon, Carle Foundation Hospital

December 2, 2016

Nicole Shields '05, School social worker
Michael Langendorf '75, Retired school guidance counselor/social worker
Keri Pipkins '96, Associate Director, The Career Center, University of Illinois
Lynae Maciel '07, Bilingual School Psychology

February 3, 2017 - Human Resources

Lauren Hays '12, Lincoln Prairie Behavioral Health
Denise Burger '93, Horizon Hobby LLC
Mardi Kaplan '02, Toyota Financial Services
Max Colon BS '16, Graduate student, School of Labor & Employment Relations

March 15, 2017 - Law and University Governance

Lindsay K. H. Anderson, Executive Director, UIUC Office of Government Relations

April 7, 2017 - Neuropsychology/Neuroscience

Bradley Axelrod '84, Neuropsychologist
Mike Basso, Neuropsychologist
Monica Fabiani, Cognitive Neuroscience Division, Department of Psychology
Gabriele Gratton, Cognitive Neuroscience Division, Department of Psychology



What's Your Story?

Undergraduate psychology students would like to know how you use your Psychology major in your current field/job/career. Here's an opportunity to share your story with current undergraduate students.



Bradley Axelrod (BS '84)

As a Clinical Neuropsychologist, my BS in Psychology gave me the foundation knowledge I needed for graduate school and to decide what areas of psychology did NOT appeal to me. Figuring out what I did not want to do was as important as zeroing in on what I did want to do.



Fabian Camarena (BS '95)

I am currently a Director of Finance for a Fortune 50 insurance company and a Certified Public Accountant. There is no doubt that my psychology background has given me a competitive advantage over my business peers and has been instrumental in my career advancement.



Tynisa Gaines (BS '98)

I am an Enrolled Agent which is the highest license granted to a tax professional to represent clients before the IRS nationwide. In my private tax practice, even though clients are not literally on my couch, I use my psychology degree daily to organize the relevance of their personal information for their tax return. Although, difficult sometimes, I limit my recommendations to tax advice.



Erica Hornthal (BS '05)

I am currently a licensed clinical professional counselor and board certified dance/movement therapist practicing in Chicago. I own and operate *Chicago Dance Therapy*, Chicago's premier dance therapy and counseling practice. I utilize my undergraduate psychology skills every day. I use basic theory and methodology of Rogers,

Freud, and Erikson. Without early exposure to these psychologists, I would have been lost in my graduate work.

Read more about their careers at: www.psychology.illinois.edu/mentoring/yourstory/ ♦

Faculty Recognized for Professional Excellence

Fred & Ruby Kanfer Professor in Psychology

By Taylor Hoffman, Communications Major, BS'18



For years of critical research, **Benjamin L. Hankin**, has been named the Fred and Ruby Kanfer Professor of Psychology. It is the first ever endowed named position in the Department of Psychology.

An investiture is one of the highest honors that a faculty member can receive. The position is named for the late Frederick Kanfer and his wife, Ruby. Frederick received his doctoral degree in clinical psychology from Indiana University in 1953 before joining the Illinois faculty in 1973.

Hankin, a renowned researcher in his field, arrived at Illinois this fall. He worked previously at the University of Denver after earning his doctoral degree at the University of Wisconsin in 2001. He has since published over 140 papers and co-edited two books, with his research continuously funded by the National Institutes of Health, National Science Foundation, and private foundations. Hankin's research focuses on understanding depression, especially in children and adolescents.

"I feel very fortunate to accept this endowed position," Hankin said. "I am very grateful to the Kanfer family, the College of LAS, the university, and the Department of Psychology for the opportunity to come to University of Illinois, where I get to continue my research and teaching, in a profession I love, at a world class university with amazing colleagues who have become wonderful friends." He added: "For us as academics, the relationships we have with our students and colleagues is what makes this profession so exciting, vibrant, and joyous."

Brian Ross, associate executive dean of the College of LAS, said a named professorship is one of the greatest honors for a faculty member. "It recognizes great work," said Ross. "Recipients bring honor to themselves, to their department, to the college, and to the institution as a whole. And through their work, they provide inspiration and opportunity for their students."

Wendy Heller, head of the Department of Psychology, spoke highly of Hankin's research, noting



Front Row: Wendy Heller, Middle Row: Ruth Kanfer, Ben Hankin, Larry Kanfer, Provost Charles Tucker.
Back Row: Professors Emeritus Julian Rappaport and Gregory Miller, and Former Executive Associate Dean Brian Ross.

that one reviewer described Hankin's work on gender differences in depression as a "standard starting point" for any work on depression in adolescence. "The department is extremely pleased to have such a strong scholar in the area of psychopathology who is helping understand what causes mental illness, how to diagnose it, and how to treat it," she said.

Kanfer was a pioneer in the behavioral therapy movement and a founding father of self-management therapy. His seminal research on self-control and applications to the therapeutic process provided the foundation for the modern theories of self-management and cognitive behavior therapy methods being practiced widely today.

He dedicated more than 25 years to Illinois and was named professor emeritus in 1995. He published over 150 scientific articles and served on editorial boards of U.S. and international psychological journals. A Fulbright Professor in Europe, he was awarded the Alexander von Humboldt Senior Scientist Award and the Gold Medal of Honor from Vienna for his contributions to the advancement of clinical psychology in Europe. In October 2002, Kanfer was awarded the Lifetime Achievement Award from the Deutsche Gesellschaft fur Psychologie.

Frederick and Ruby Kanfer met and married in New York in 1952. Over the next 50 years, Mrs. Kanfer served as an active partner in her husband's career, a devoted homemaker, and loving mother. She enjoyed traveling, outdoor activities and reading. They had two children, Ruth and Larry Kanfer, both of whom have close ties to the University of Illinois, and three grandchildren, Sarah, Anna and David.

Ruth Kanfer is a Professor of Psychology and Founding Director of the Georgia Tech Work Science Center at the Georgia Institute of Technology. She



Anna Kanfer, David Kanfer, Larry Kanfer, Alaina Kanfer, Phillip Ackerman, and Ruth Kanfer.

received a PhD in Clinical Psychology from Arizona State University (1981), and completed a post-doctoral fellowship in Quantitative Psychology at the University of Illinois at Urbana-Champaign. Kanfer's husband, Phillip Ackerman, is a Professor of Psychology at the Georgia Institute of Technology. He received his master's degree (1981) and PhD degree (1984) from the Department of Psychology at the University of Illinois at Urbana-Champaign.

Larry Kanfer received his degree in Architecture (1979) from the University of Illinois at Urbana-Champaign, and his wife, Alaina Kanfer, completed a post-doctoral fellowship in the department's Quantitative Psychology Division. Kanfer is the owner of Larry Kanfer Photography Gallery located in Savoy, IL. His works are shown in galleries, museums, and in private/corporate collections across the country. He is known as the pre-eminent photographer of Midwestern Prairiescapes. ♦



Ruby and Fred Kanfer.

FACULTY AWARDS



CHIPS Fellow

Joseph Cohen's Fellowship is funded through the NIMH Division of Services and Intervention Research. Child Intervention, Prevention &

Services (CHIPS) is an interdisciplinary training consortium created to enhance career development for early career scientists pursuing research careers in the areas of intervention, prevention, and the provision of services for children and adolescents. ♦



Clarivate Analytics Highly Cited Researcher

Brent Roberts is one of eight University of Illinois researchers named to the Clarivate

Analytics Highly Cited Researchers list for 2016. The list identifies scientists "whose research has had significant global impact within their respective fields of study," according to a statement from Clarivate Analytics, "formerly the Intellectual Property and Science business of Thomson Reuters."

Read more: <https://news.illinois.edu/blog/view/6367/431073?rn=6751358> ♦



Distinguished Career Award

Fritz Drasgow, Professor of Psychology and Dean of the School of Labor & Employment Relations, has been honored

with the 2016 Distinguished Career Award from the Academy of Management. The award is given to scholars with a clear record of excellence in the advancement of research methods; a significant impact of research upon the science, teaching, and use of research methods; and stature relative to other scholars in the field of research methods. www.aom.org. ♦



Fulker Award

Daniel Briley received the Fulker Award from the Behavior Genetics Association for the best paper published in *Behavior Genetics* in 2015. ♦



Lincoln Excellence for Assistant Professors Award

Dan Hyde has been recognized for his exceptional accomplishments in teaching

and research by the College of LAS. Read more: go.las.illinois.edu/LEAP16 ♦



Mabel Kirkpatrick Hohenboken Award

Nathan Todd was selected as the 2016 recipient of the Hohenboken Award. This award recognizes departmental faculty

who consistently contribute to instruction, focus on students and the quality of instructional outcomes, employ innovative approaches to teaching and influence the curriculum. ♦



Social and Behavioral Sciences Research Initiative

Professor **Brent Roberts** is working with a steering committee to lead a campus

effort—the *Social and Behavioral Sciences Research Initiative*.

Illinois is home to some of the foremost social and behavioral sciences experts in the world, but because they are dispersed across the university (in at least 45 different departments), no single college or unit represents their interests. The Office of the Vice Chancellor for Research has launched a new initiative to explore how to facilitate large-scale, interdisciplinary research projects that leverage our social and behavioral sciences expertise and support

the next generation of researchers in the field.

For more information visit: <https://research.illinois.edu/SBSRI> ♦



Society for Psychophysiological Research

Professor **Kara Federmeier** is President-Elect for the Society for Psychophysiological Research. ♦



University Scholar

Nicole Allen was selected as a University Scholar for the 2016-17 academic year. Allen is internationally recognized for her scholarship in the study

of organized community efforts to address domestic violence and has been at the forefront of developing service learning courses for undergraduates. Read more: go.illinois.edu/universityscholars16 ♦



PSC Assistant Director

Nkechinyelum A. Chioneso is an Assistant Director of the Psychological Services Center in the Clinical/Community

Division. She provides leadership in the development and implementation of community engagement efforts for the Division by developing both supportive relationships and relevant services with the campus and larger community. Earning her doctoral degree at North Carolina State University, Dr. Chioneso's major areas of professional interest include sustaining wellness, promoting psychological sense of community, and building healthy systems. In collaboration with her co-creators, Dr. Chioneso aims to foster community spaces that inspire a greater and more equitable realization of our human potentials. ♦

Professorial Scholars

The Department of Psychology has a tradition of honoring faculty members who have achieved promotion to Associate or Full Professor with the title of Professorial Scholar. The Professorial Scholar titles are named after eminent emeritus faculty members in the department. The appointments serve as recognition of our colleagues' outstanding achievements in research, teaching, and service, as validated by their promotion in rank. We honor not only our newly promoted faculty members but our esteemed emeritus faculty members as well.

The appointments are in effect for one year and each provides a discretionary fund to support scholarly activities. The following have been named Professorial Scholars effective January 1, 2017:

Julian Rappaport Professorial Scholar in Psychology: Nicole Allen, and Carla Hunter

Emanuel Donchin Professorial Scholar in Psychology: Florin Dolcos

Charles Erickson Professorial Scholar in Psychology: Alejandro Lleras

Charles L. Hulin Professorial Scholar in Psychology: Daniel Newman



Nicole Allen



Carla Hunter



Florin Dolcos



Alejandro Lleras



Daniel Newman

2017 Lyle Lanier Lecture



The Department of Psychology has invited **Dr. Takao Hensch** to present our annual Lyle Lanier Lecture, "The Power of the Infant Brain," on Monday, March 27, 2017, 4 p.m. at the Beckman Institute Auditorium, 405 N. Mathews, Urbana, IL.

Dr. Hensch is a joint professor of Neurology, Harvard Medical School at Boston Children's Hospital, Professor of Molecular and Cellular Biology at Harvard's Center for Brain Science, and he currently directs the NIMH Silvio O. Conte Center for Basic Mental Health Research at Harvard. His research explores the mechanisms underlying critical periods of brain development, specifically, neural circuits sculpted by experience in infancy and early childhood. ♦

LYLE H. LANIER FUND



Lyle H. Lanier received an undergraduate degree from Vanderbilt University in 1923, and an MA (1924) and PhD (1926) from Peabody College. Dr. Lanier was invited in 1950 to head the Department of Psychology at Illinois after a distinguished career at Vanderbilt University, New York University, and Vassar College. It was under his leadership that the department recruited the excellent faculty that established Illinois as one of the best departments in the country. He had a very broad concept of psychology that encompassed basic research with a deep commitment to placing psychology in the public service.

The Department of Psychology would like to thank L. Gene and Catherine Lemon, and Lyle Lanier, Jr. for establishing the Lyle H. Lanier Fund in memory of Catherine and Lyle's father, head of the Department of Psychology (1951-1959); dean of the College of Liberal Arts and Sciences (1959-1960); and provost of the Urbana-Champaign campus (1960-1972).

In honor of his many contributions, the Department organized the Lanier Lecture Series to illustrate how the scientific approach to the analysis of the mind and of behavior can yield results of significance to a variety of human concerns. The Lanier Lecture brings a distinguished psychologist to campus whose work is of interest to the general campus and local community. Previous Lanier Lecturers have included:

- Linda Bartoshuk, Yale University School of Medicine
- Marta Kutas, University of California, San Diego
- Hazel Rose Markus, Stanford University
- Richard Nisbett, University of Michigan
- Daniel Kahneman, Princeton University
- Avshalom Caspi, King's College, London; University of Wisconsin-Madison
- Susan Goldin-Meadow, University of Chicago
- Robert Bjork, University of California, Los Angeles
- Emanuel Donchin, University of California, Los Angeles ♦

NEW FACULTY



Aron Barbey
Associate Professor, Cognitive Neuroscience Division

Research in my laboratory investigates the neural mechanisms of human intelligence. Through a

combination of brain imaging (structural and functional MRI) and neuropsychological patient studies, our research seeks to uncover the mechanisms that shape higher cognitive processes and to develop predictive models of brain function that link neural systems to specific patterns of inference and behavior.

Our research has helped to identify and characterize the brain networks that are essential to higher cognitive functions (general intelligence, fluid intelligence, cognitive flexibility, and working memory), and has examined their roles in language processing (discourse comprehension) and social communication (emotional intelligence and social problem solving).

A central aim of our current research is to develop cognitive neuroscience directed interventions to improve higher cognitive functions, investigating the beneficial effects of cognitive, physical fitness, and nutritional interventions on executive control, learning, and memory. For further detail and updates, please see: www.decisionneuroscience.org.



Thomas Kwapil
Professor, Clinical/Community Psychology

My program of research investigates schizotypy and schizophrenia from experimental and

developmental psychopathology perspectives. My research focuses on developing and testing symptom, personality, neurocognitive, biobehavioral, and genetic associates of schizotypy.

A secondary, but related, focus of my research laboratory examines bipolar spectrum psychopathology, and specifically clinical and subclinical manifestations of hyperthymic traits. My research into these topics employs cross-sectional and prospective studies and actively involves student researchers.

My laboratory is currently focusing on research in three interrelated areas, including:

1) Expression of Clinical and Subclinical Psychopathology in Daily Life using Experience Sampling Methodology, 2) Identification and Assessment of the Multidimensional Structure of Schizotypy, and 3) Assessment of Risk for Bipolar Spectrum Psychopathology.



Heidemarie Laurent
Assistant Professor, Clinical/Community Division

What separates people who can thrive in the face of stress from those who succumb to mood disorders? How do early and later relationships buffer or exacerbate stress vulnerabilities, and how can people learn to respond more adaptively to daily stressors?

My research focuses on (1) defining what we mean by stress "regulation" by relating multiple biological (i.e., neural, neuroendocrine, autonomic) and behavioral stress response facets to psychological symptoms and well-being; (2) identifying developmental paths shaping stress regulation, including prenatal and postnatal influences of parental depression; and (3) determining how practices such as mindfulness can improve stress regulation, and whom such practices are most likely to benefit.

My work combines stress physiology monitoring, neuroimaging, and/or behavioral observation as people respond to naturalistic stressors that arise within close interpersonal relationships, toward the ultimate goal of interrupting intergenerational cycles of stress dysregulation and depression.



Sean Laurent
Assistant Professor, Social-Personality Division

What makes some people better (or worse) than others at decoding others' thoughts and emotions? How do people

attempt to understand others' minds, and how does trying to get inside another person's head affect feelings about that person and the self? How do intuitions or knowledge about others' mental states affect judgments of them and their actions, such as

a sense of them as "good" or "bad" or a desire to see them blamed or praised, punished or rewarded?

These are the types of questions that motivate my work, organized around the central theme of "how people think about, feel about, and form judgments of others' minds and actions."

Much of my recent research has focused on the cognitive and affective mechanisms that underlie judgments of blame and desire to punish. Because judgments about harm, responsibility, and blameworthiness are central to many types of legal judgments, this research has also sparked an interest in how folk psychology underlies legal decision-making. However, I am also interested in the other side of this question: how people reason about praise, and the differences in reasoning processes that underlie why people appear quite willing to blame others for causing harm, but are hesitant to give praise for causing benefit.



Andrea Miller
Visiting Assistant Professor, Social-Personality Division

My research examines the social-psychological foundations of prejudice, discrimination, and inequality under the law.

Current projects include an examination of gender ideology in family responsibilities discrimination in the workplace, a study of moral typecasting and racial inequality in criminal justice outcomes, and a study of judicial biases in court outcomes.

In investigating the role of social processes in inequality, I use core social-psychological theories and methods to examine basic social cognitive, attitudinal, and behavioral processes. My methods include experimentation, scale construction, factor analysis, coding, and measurement at both explicit and implicit levels of processing.



Chadly Stern
Assistant Professor, Social-Personality Division

My research focuses on how people's motivations shape the way they perceive and interact with others. I have a

particular interest in how the motivations of liberals and conservatives influence their perceptions of

the social world (e.g., categorizing others into groups, estimating the popularity of one's opinions), and how these perceptions can shape large-scale outcomes (e.g., social inequality, successful political mobilization).



Sepideh Friberg Sadaghiani
Assistant Professor, Cognitive Division

My work investigates how the function of higher-order brain areas modulates the way humans perceive and interact

with the world. Using a multi-methods approach, including fMRI, EEG, simultaneous EEG-fMRI, and genetic analyses in healthy participants and neurological patients, I study activity in large-scale brain networks and communication across these networks to understand top-down modulation and cognitive control.

Professor William Greenough's Legacy



A few short years ago, we lost a leader in Psychology at the University of Illinois. Professor **William Greenough's** legacy in the fields of psychology and neuroscience can be seen through his pioneering research

in the study of brain elasticity. He also received numerous accolades including election to the National Academy of Science and being named a fellow of the American Association for the Advancement of Science.

Many will argue his true legacy lies with the special interest he took in the students in his lab; those he mentored and with whom he shared his passion for the process of science. We strive to continue Bill's legacy of student support at Illinois. For more information on Bill's career and his legacy at Illinois: www.psychology.illinois.edu/giving/shape/Greenough_Scholarship_Fund.aspx

FACULTY RETIREMENT



Art Kramer, Director of the Beckman Institute for Advanced Science & Technology (2010-2016), Swanlund Chair, and Professor of Psychology and Neuroscience, retired May 2016 after thirty-two years at the

University of Illinois at Urbana-Champaign.

Kramer earned his bachelor's degree from Stony Brook University (1975) and received his PhD in Cognitive/Experimental Psychology (1984) from the University of Illinois at Urbana-Champaign. Kramer's research projects include topics in cognitive, cognitive neuroscience, aging, and human factors. He is a former associate editor of *Perception and Psychophysics* and is currently a member of six editorial boards. Kramer is also a Fellow of the American Psychological Association, American Psychological Society, a former member of the executive committee of the International Society of Attention and Performance, and a recipient of a NIH Ten Year MERIT Award.

Kramer's research has been featured in a long list of print, radio and electronic media including the *New York Times*, *Wall Street Journal*, *Washington Post*, *Chicago Tribune*, *CBS Evening News*, *Today Show*, *National Public Radio*, and *Saturday Night Live*. Kramer assumed the position of senior vice provost for research at Northeastern University May 2016.



We bid a fond farewell to **Brian Ross** who retired in November after thirty-four years at the University of Illinois at Urbana-Champaign.

Ross earned his bachelor's degree from Brown University (1974), MS in Mathematical Statistics from Rutgers (1977), M.A. in Psychology from Yale University (1978), and PhD from Stanford (1982). He joined the Department of Psychology in 1982 and was a member of the department's Cognitive Division. His research interests include cognitive psychology issues in learning, memory, problem solving and categorization. In particular: problem-solving and learning in complex domains, categorization,

learning, and use of concepts; reminders and the use of memory.

Ross served as the Interim Head in Psychology (2011-12), Interim Associate Dean for the Sciences and Social Sciences (2012-13), Interim Dean (2013-14), and Executive Associate Dean (2015-2016).

Professor David Irwin was one of the speakers at the College of LAS retirement event for Ross.

"It is a sad pleasure to speak today at Brian's retirement ceremony. Sad because Brian and I have been friends and colleagues for over 25 years and I will miss him very much, but a pleasure because I am very happy that Brian and his wife Cheri will be joining their wonderful daughters in the San Francisco area and I know that means a lot to them.

Brian joined the Department of Psychology in 1982 after earning his PhD from Stanford University. He was such a star at Stanford that he was actually hired by us while he was still just a 3rd year grad student, before he even had a chance to go on the job market.

Brian's professional accomplishments are excellent. His research has focused on how people learn, reason, and understand in complex domains. He has over 100 publications and his work is highly cited. His research has been supported by the National Science Foundation, the Air Force Office of Scientific Research, and the Institute of Education Sciences. He has served as the series editor of *The Psychology of Learning and Motivation* book series; the editor-in-chief of *Memory & Cognition*; the co-author of a textbook, *Cognitive Psychology*; and he served as the chair of the governing board of the major research organization in his field, the Psychonomic Society, in 2010. During his time as chair he made several bold moves that increased the financial viability of the organization to such an extent that they now have more money than they know what to do with. If only we had such problems!

On a personal level, Brian is a great friend and an excellent mentor of graduate students, junior faculty members, associate editors on his editorial board, and unit executive officers. He is a very generous and compassionate person who has helped many people in a quiet, private, and personal way. I admire him very much. We are losing not only a great scientist and a great administrator but a great person as well.

GENEROUS DONORS ASSIST STUDENTS

The Department of Psychology is grateful to the generous donors who have established fellowships and awards in honor of family members and distinguished faculty and staff who have influenced their lives. Gifts from alumni and friends enable the department to support the research of our most promising students.

GRADUATE STUDENT AWARDS

Nancy Hirschberg Memorial Award



Nancy Hirschberg was a member of the psychology department here in Champaign from 1964 until 1976, when she joined the psychology faculty at the U of I Chicago campus.

Shortly after her death in February 1979, her friends and colleagues at both campuses met to establish the Nancy Hirschberg Memorial Fund to create a living remembrance with the hope that her memory will serve to encourage others to attain their full potential.

The result is the *Nancy Hirschberg Memorial Award* that is presented each year to a psychology graduate student who, during that year, has performed outstanding original research or scholarship in areas related to Professor Hirschberg's interests. These areas include individual differences, personality, human judgment, and multivariate analysis. The award consists of a cash prize and inscription of the recipient's name on a plaque which is kept on permanent display on the third floor.



Ariel James (Cognitive Division) and **Jing Luo** (Social-Personality) are the 2016 recipients for this award. James was nominated for a paper she co-authored with Scott Fraundorf (PhD '12), Eun-Kyung Lee (former postdoc), and her advisor Associate Professor Duane Watson. The paper is entitled, "Individual differences in syntactic processing: exploring

domain-specific and domain-general mechanisms." Luo's paper is entitled, "Concurrent and longitudinal relations among conscientiousness, stress, and self-perceived physical health." ♦

J. McVicker Hunt Award for Excellence in Graduate Research



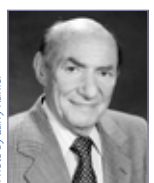
The *J. McVicker Hunt Award* was established in 2005 to honor the contributions of J. McVicker Hunt to the field of developmental psychology. Hunt was a faculty member in the Department of

Psychology from 1951-1974. Hunt's book, *Intelligence and Experience* published in 1961, has been credited for laying the groundwork for Project Head Start, and the importance of early childhood education.

The J. McVicker Hunt Award recipients are selected based on the significance and quality of their research as well as their research productivity. **Zachary Horne** (Developmental Division) is the 2016 recipient for this award.

Horne studies reason and decision making. Much of his research has focused on factors that influence belief revision, and people's evaluations of moral actions. He has also investigated knowledge ascriptions, and how novices explain scientific observations. His research is supervised by Professors Andrei Cimpian and John Hummel. ♦

Frederick & Ruby Kanfer Award



Frederick H. Kanfer, a member of the Department of Psychology from 1973 until 1995, was a pioneer in the behavioral therapy movement and a founding father of self-management therapy.

To honor his legacy, his family established the *Frederick and Ruby Kanfer Award*, to be presented to a psychology student whose scholarship and/or service in the field of clinical/community psychology is aimed at improving the psychological lives of all individuals.



Yara Mekawi is the 2016 award recipient. Mekawi's integration of science and practice, with the goal of improving people's lives, exemplify the ideals of the

Frederick and Ruby Kanfer Award. Her research and intervention are part of her long-term career goals

which address unmet mental health needs in the African American community. Dr. Carla Hunter's nomination letter stated, "Her thinking about the integration of research and practice is advanced. Hands down one of the best applications of the principles of cognitive-behavioral therapy to the Biopsychosocial Model of Racism as a Stressor I have ever observed!" ♦

Sarah C. Mangelsdorf Graduate Award in Psychology



The *Sarah C. Mangelsdorf Graduate Award in Psychology* was established in 2008 to honor Mangelsdorf for her achievements and contributions to the U of I. Mangelsdorf served

as associate head of the Department of Psychology 2000-2001, associate provost for the campus 2001-2003, head of the Department of Psychology 2003-2004; interim dean of LAS 2004-2006, and dean of LAS 2006 – summer 2008. Mangelsdorf served as dean of the Weinberg College of Arts & Sciences at Northwestern University fall 2008 – summer 2014. She accepted the position of provost at the University of Wisconsin-Madison fall 2014.



Rachel Ryskin (Cognitive Division) and **Emily Hankosky** (Cognitive Neuroscience Division) received the 2016 award, which is designed to honor an outstanding female graduate student who has exhibited excellence in research,

scholarship, teaching, and has shown the potential to be an academic leader. ♦

GRADUATE STUDENT AWARDS (continued)

Jeffrey Tanaka Memorial Award

Dr. Jeffrey Tanaka was a member of the Psychology and the Educational Psychology Departments at the U of I from 1990 until 1992. He was a fellow of the American Psychological Association and of the American Psychological Society and was elected as a member of the prestigious Society of Multivariate Experimental Psychology. At the U of I he was recognized as a University Scholar and a College of Education Scholar.

After his untimely death in November 1992, friends and colleagues established the *Jeffrey Tanaka Memorial Award* that is presented to graduate students studying quantitative or personality psychology. The award rotates on a yearly basis between the Department of Psychology in the College of Liberal Arts and Sciences, and the Department of Educational Psychology in the College of



Education. The award recognizes outstanding original research or scholarship in areas related to Professor Tanaka's interests in quantitative psychology and personality psychology.



Morgan Sima Finy and **Konrad Bresin** (Clinical-Community Division) received the award for their paper published jointly with Professors Donna Koral and Edelyn Verona, entitled,

"Impulsivity, risk taking, and cortisol reactivity as a function of psychosocial stress and personality in adolescents." ♦

UNDERGRADUATE STUDENT AWARDS

Raymond B. Cattell Scholarship in Psychology

The *Raymond B. Cattell Scholarship in Psychology* was established by Dr. Samuel Krug (MA '68; PhD '71) in honor of Professor Raymond Cattell who served as his advisor through graduate school and remained a close friend until he died in 1968. He is currently chairman and CEO of MetriTech, Inc., an educational



testing company that works primarily with large-scale, state testing programs.

The 2016 Recipients are **Ryan Kahle** (pictured above) and **Yong-Eun Rhee**. ♦

Roger B. Smith Scholarship in Psychology



The *Roger B. Smith Scholarship in Psychology* was established in June 2014 by Roger Bennett Smith to support undergraduate students. Mr. Smith graduated in 1996 with a BS in Psychology and a minor in Chemistry. He formed Millennium Dealers Services, Inc. in 1999 with his son. The company is a wholesaler of mobile electronics and he continues to serve as president and owner of the company.

The 2016 Recipients are **Alexander Contreras-Rogers**, **Ivy Hernandez Delgado**, **Kimberly Galvez**, **Aaminah Long**, and **Bogdan Schak**. ♦

Julie Sutton-Osgood Psychology Award



The *Julie Sutton-Osgood Award in Psychology* was established in 2008 by family and friends in memory of Sutton-Osgood whose career goal was to become a practicing physician. Sutton-

Osgood trained as an emergency medical technician (EMT) and worked summers for an ambulance company while enrolled as a psychology student at Illinois.

After graduation she completed a paramedic course and worked for Superior Ambulance Company and became their EMS coordinator through Christ Hospital and Hope Children's Hospital. A few years later she attended physician assistant school while she continued to work full-time. Sutton-Osgood fulfilled her goal to become a licensed Physician's Assistant. The *Julie Sutton-Osgood Award in Psychology* is intended to help students realize their dream of becoming either a physician or another type of medical practitioner.



The 2016 *Julie Sutton-Osgood Award in Psychology* was awarded to **Danielle Komsky** who entered medical school this fall at Rush Medical College. ♦

Janet Tritsch Memorial Award



The *Janet Tritsch Memorial Award* was established in 1975 in memory of Janet Tritsch, who as an undergraduate student was active in psychology research.

The 2016 award was presented to **Maureen Gray** for her senior honors thesis, "Can Associative and Relational Learning Interact? An Investigation Using Category Learning." Gray's research advisor was Professor John Hummel. ♦

CAPSTONE RESEARCH

The Capstone Undergraduate Research program, coordinated in 2016 by Associate Professor Monica Uddin, ideally taken for two-semester, is a course designed for advanced students who have arranged to do a research project in the laboratory of a faculty member.

The combination of working intensively in a research laboratory and meeting weekly as a group to present and discuss each student's research project, together with formal instruction on research ethics, scientific writing, and making presentations, will provide in-depth background knowledge of research in psychology, and will teach students to make effective oral and written presentations of their findings. ♦



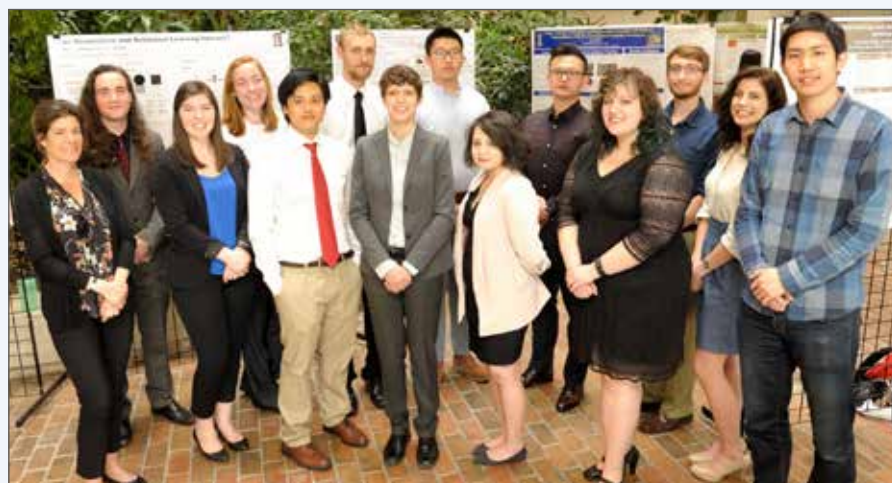
Front Row (L-R): Ashana Badlani, Cheryl "Hoi Ting" Wan, Bidisha Roy, Andi Garcia, Associate Professor Monica Uddin

Back Row (L-R): Grace Kim (graduate TA), Elizabeth Grogan, Amalia Ionescu, Samantha Shah, Gabriel Gould

UNDERGRADUATE STUDENT AWARDS

2016 FALL JAMES E. SPOOR SCHOLARSHIP RECIPIENTS AND HONORS IN PSYCHOLOGY

The Honors Program, coordinated in 2016 by Professor Eva Pomerantz, is a three-semester sequence of courses designed to offer outstanding undergraduates an opportunity to do sustained scholarly work on a specific research project, culminating in the preparation of an undergraduate Bachelor's thesis, and a poster presentation at the Honors Program Fair. Students who complete the program graduate with "Honors in Psychology." Twelve students presented their research at the Honors Program Fair on April 25, 2016. ♦



Front Row (L-R): Professor Eva Pomerantz, Sarah Zola, Heinrich Pinardo, Hannah Swoboda, Ivy Hernandez Delgado, Stephanie Boas, and Yang Qu (graduate TA)
 Back Row (L-R): Thane Fowler, Bailey Cation, Zacharial Bertels, Ziang Xiao, Zezhou Gan, Robert Shepard, and Maureen Gray
 Not pictured: Akram Almasri, Haris Arshad, and Richard Kacirek



James E. Spoor is a distinguished alumnus of the Department of Psychology and the University of Illinois (BS '58). The scholarships are a gift by his wife, Mrs. Nancy Spoor, to honor her

husband and help worthy undergraduate students.

Spoor had a very successful career that covered more than 25 years in human resources, line management and global HR operations with several respected Fortune 500 corporations in the energy, high tech, and food processing industries. During his career, Spoor earned a reputation as a respected visionary, pioneer, and innovator who focused on exploiting technology to address strategic business issues.

In 1984, Spoor founded SPECTRUM Human Resources Systems Corporation. With his passion for HR and technology, SPECTRUM established itself as a leading provider of HR, benefits administration, talent acquisition, and training and development systems to high expectation mid-market organizations.

In recognition of his achievements, the department presented Spoor with a Distinguished Alumni Award at the department's awards ceremony on May 13, 2007. ♦

DISTINCTION IN PSYCHOLOGY

Graduating with Distinction in Psychology requires significant research and academic effort by undergraduate students. For Distinction, a student must work for two semesters on a research project with a faculty member, and then prepare an undergraduate bachelor's thesis. (Not pictured: Dana Chamberlin and Jiaren Zhang) ♦



Ashana Badlani



Andi Garcia



Gabriel Gould



Elizabeth Grogan



Amalia Ionescu



Ryan Kahle



Joao Moreira



Namrata Nanavaty



Bidisha Roy



Kristen Sanders



Samantha Shah



Fangziyun Tong



Ho Ting "Cheryl" Wan



Yuai Yao

DIVISION AWARDS FOR OUTSTANDING UNDERGRADUATE STUDENTS

Your generous gifts to the Partnership for Psychology Fund bolsters our funding of awards for outstanding undergraduate research and academic accomplishments. ♦

BEHAVIORAL NEUROSCIENCE



Donald O. Hebb Award:
Stephanie Boas

Karl Lashley Award:
Jiaren Zhang

COGNITIVE NEUROSCIENCE



Michael Coles Award:
Benjamin Olivari



Manny Donchin Award:
Sarah Zola

CLINICAL/COMMUNITY



Community Action Award:
Edith Jaucian



Outstanding Clinical-Community Science Undergraduate Student Award:
Kelly Gaul

COGNITIVE



Charles Osgood Award:
Bailey Cation



Outstanding Undergraduate Student Award:
Maureen Gray

DEVELOPMENTAL

Outstanding Undergraduate Student Award:
Mary Alcott



Outstanding Undergraduate Student Award:
Camille Johnson

Outstanding Undergraduate Student Award:
Alexis Catibog



Outstanding Undergraduate Student Award:
Simon Park



J. McVicker Hunt Award:
Zachary Horne

QUANTITATIVE



Outstanding Undergraduate Student Award:
Vladimir Potiyevskiy

SOCIAL-PERSONALITY-ORGANIZATIONAL



Harry Triandis Award:
Ziang Xiao

VISUAL COGNITION & HUMAN PERFORMANCE



Charles Eriksen Award:
Daniel Byrne



Christopher Wickens Award:
Kristen Sanders

View pictures of all the 2016 award recipients at:

www.psychology.illinois.edu/alumni/news/gallery

Psychology's Bronze Tablet Winners

Congratulations to Psychology's Bronze Tablet winners. Inclusion on the Bronze Tablet is one of the university's highest honors for graduating students: Students are selected based on their outstanding academic performances during their undergraduate studies. ♦

- Farah A. Chalisa, Psychology & Political Science
- Dana M. Chamberlin, Psychology
- Albert H. Chang, Molecular and Cellular Biology & Psychology
- Taylor Lynne Greenspon, Psychology
- Janice Wenchun Lin, Political Science & Psychology
- Orion D. Lovell, Psychology

- Marian Mirza, Psychology & Spanish
- Erika Juanita Rosenberger, Psychology
- Grace Elizabeth Schaffer, Psychology
- Allison Frances Schartman, Molecular and Cellular Biology & Psychology
- Michael L. Schasane, Psychology & English
- Laura Elizabeth Seimetz, Psychology
- Parshva B. Shah, Molecular and Cellular Biology & Psychology
- Andrew Townsend, Psychology
- Neha A. Viswanath, Psychology
- Jocelyn Clare Wysocki, Psychology
- Omar A. Zaki, Molecular and Cellular Biology & Psychology
- Sarah Elizabeth Zola, Psychology

The following students were recognized for excellence during the past year. All recipients receive certificates and have their names inscribed on award plaques that are kept on permanent display in the Psychology Building.

Graduate Students Honored for Teaching Excellence

Congratulations to **Seong Hee Cho** (Industrial/Organizational Division) and **Emily Hankosky** (Behavioral Neuroscience), pictured below, 2016 recipients of the Department of Psychology's Award for Excellence in Teaching by a Graduate Student. Cho is also a recipient of the College of LAS and the Provost's 2016 Teaching Excellence Awards.



Seong Hee Cho

Cho taught Psychology 201: Introduction of Social Psychology for the following academic semesters: 2013-14, summer 2014, and 2014-15.

"Seong's sophisticated grasp of social psychology is evident in her lectures, as she is able to present the material in a clear and comprehensible way. Three aspects of her teaching method that have especially helped me throughout the semester include her approachability, enthusiasm, and the numerous examples of each concept that she infuses into her lectures."

"For me, Cho was an inspiration. Not only through her lessons in the classroom, but through her character and work ethic."



Emily Hankosky

Hankosky was an instructor in Psych 311: Behavioral Neuroscience Lab for three semesters.

"Emily strives to create a learning environment that facilitates curiosity, excitement, critical thinking, and inquiry."

"Psych 311 was one of the foundational blocks for my career aspirations today. Through this class and Ms. Hankosky's enthusiasm, I have gained much appreciation and love for research, encouraging me to pursue

research both while I was in my undergrad and continues today as a lab manager at Northwestern University. This class taught me the potential that research held, and what implications of a simple study can have on the entire field." ♦

Ed Scheiderer Memorial Research Award



Wenting Mu received the award for her first-authored paper entitled, "The structure of negative self-conscious emotions: An empirical investigation." Dr. Howard Berenbaum, Wenting's recommender stated, "I believe Wenting is doing incredibly important work on negative self-conscious emotions that questions some long held assumptions in the field. I believe the research is quite innovative, methodologically clever, and the data analyses (which are critical to the paper) are quite cutting edge." ♦

Herman Eisen Award



Drs. Nicole Allen and Joe Cohen nominated **Suvarna Menon** for her outstanding work with mindfulness-based interventions, psychotherapy to children with trauma histories, and the training and supervision of community advocates who work with domestic violence survivors. Her recommenders stated, "Suvarna embodies what we value in recipients of the Eisen

Award: "clinical skills, sensitivity, perception, and optimism for change in individual and social lives." ♦

NSF Graduate Fellowships



Melody Buyokozer Dawkins (Developmental Division) is a recipient of an NSF Fellowship. She works with Professor Renee Baillargeon.

Honorable Mentions: **Jia Chong** (Social-Personality Division), **Megan Davis** (Clinical-Community Division), **Janice Ng** (Developmental Division). ♦

Sandra Goss Lucas Award for Excellence in Teaching Introductory Psychology

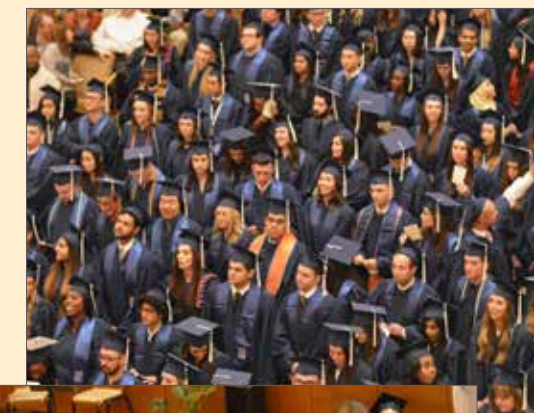


The award was established in 2008 in honor of **Sandra Goss Lucas**, who served as the director of the Introductory Psychology course for 11 years. **Deborah Cronin** (Visual Cognition & Human Performance), pictured on right, received the award for

her outstanding contributions as an instructor in Psych 100. ♦

2016 Graduates

The Department of Psychology held its Convocation Ceremony on Saturday, May 15, 2016 in the Great Hall at the Krannert Center for the Performing Arts. The department presented diplomas to our doctoral, master's, and bachelor degree students. View the convocation pictures at: www.psychology.illinois.edu/alumni/news/gallery ♦



INCOMING GRADUATE STUDENT CLASS



Front Row (L-R): Elizabeth Lozano, Jacqueline Yi, Julia Spielmann, Nicole Morales, Melinh Lai, and Shoko Watanabe

Middle Row (L-R): Talia Ariss, Winnie Chung, Emily Blevins, Danyelle Dawson, Haina Modi, Minjae Seo, Anqi Li, Anqing Zheng, and Randi Vogt

Back Row (L-R): Dustin Haraden, Max Egan, Jack McDonald, Amanda Rose Yuile, Ryan Palmer, Wenhao Dai, Daniel Bowie, Erin Long, and Grace Clements

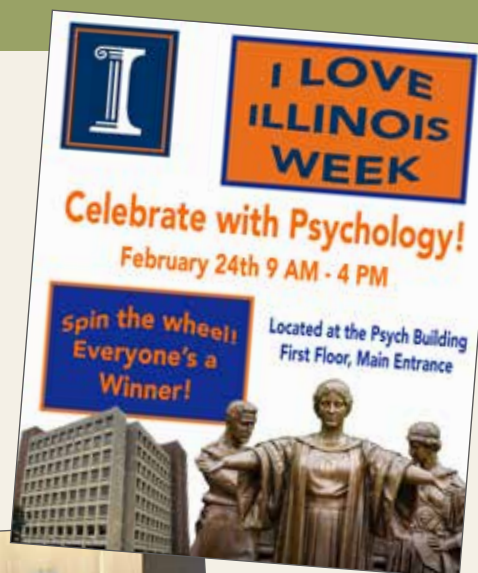
Not pictured: Kevin Hoff, Tina Schweizer, Sarah Sperry, and Colleen Vaughan

I LOVE ILLINOIS WEEK

In honor of the birthday of the University of Illinois, the 1867 Society hosted "I Love Illinois" week February 22-26. As part of the festivities, Psychology Leaders organized a one-day "I Love Psychology" event in the lobby of the Psychology building. Students were enthusiastic about the chance to spin a wheel for a variety of prizes after they wrote what they loved about Psychology on two large "I" posters. ♦



"I love learning about the stigmas surrounding mental illnesses and how to avoid stereotyping."



"There are so many great courses and enthusiastic teachers!"



"It has taught me to think critically about a variety of situations."

"I love the research and professors!"

CLASS OF 2016: SENIOR 100 HONORARY

Senior 100 Honorary, sponsored by the University of Illinois Alumni Association (UIAA) and Student Alumni Ambassadors (SAA), recognize 100 graduating seniors for their notable achievements as students as well as their future commitment to the university. Interested seniors from all of the Colleges across the campus have their applications reviewed by the UIAA and SAA. The honorees are active campus leaders who have developed leadership skills and demonstrate University loyalty through their past campus involvement as well as their future plans.

The Department of Psychology is pleased to announce that six psychology students were selected for this honor. ♦

- Bailey Cation: Psychology (Minor: Linguistics)
- Farah Chalisa: Political Science & Psychology
- Maxwell Colon: Psychology & Spanish (Minors: Leadership Studies & Business)
- Meredith Heim Political Science, Psychology & Leadership Studies
- Janice Lin: Political Science & Psychology (Minor: Global Studies)
- Krupa Patel: English, Psychology, Philosophy



NEW STAFF

Suzanne McNattin joined the department as Director of Budget of Budget and Resource Planning on September 20. McNattin has a master's degree in Education Administration and a bachelor's degree in Business Education. Prior to joining Psychology, she worked for over twelve years as a Budget and Resource Coordinator and Assistant to the Associate Dean in the College of Education. In this role, she provided budget and financial oversight, proposal development, as well as providing day-to-day account management. ♦



RETIREE

Betty Heggemeier

DEPARTMENT STAFF AWARDS



STAFF AWARD
Sarah Challand



ACADEMIC PROFESSIONAL AWARD
Gary Wszalek

College of LAS Staff Award

Award winner **Mae Donaldson** pictured with Brian Ross.



Psychology Adventures



Michelle Naese at the top of Lion's Head mountain, South Africa.

Where have you worn your commemorative Psychology T-shirt? Share your pictures with us and you can be featured in *Psychology Times*. Contact Cheryl Berger at chberger@illinois.edu. ♦

ALUMNI NEWS

1970s

Kevin Davis (BS '76) received an MA in Clinical Counseling in 1978. He is Director of Psychiatry at four Chicago-land hospital based programs; Clinical Professional Counselor (IL) 1995-present; Adjunct Professor of Counseling at Governors State University 1980-1986; Adjunct Professor of Psychiatry at Southern Illinois University School of Medicine 2001-2004; Associate Professional Counselor (AZ) 2009-present.

The Honorable **Jeffrey Ford (BS '73; JD '76)** received the inaugural 2016 Distinguished Downstate Alumnus Award from The Downstate Legal Society at the University of Illinois' College of Law in recognition of his long history of public service and commitment to reform. In 1991, Judge Ford founded the first DUI court in the country. In 1999, he established the Champaign County Drug court to break the cycle of recidivism. He also received the National Association of Social Workers Public Citizen of the Year Award (2013) and the Goldstein Award for Preeminent Contribution to the Drug Court Field from the National Association of Drug Court Professionals (2014).

1980s

Beth Rom-Rymer (PhD '86) is the 2016 recipient of the National Register's Wellner Lifetime Achievement Award. The award, named after the first Executive Officer, Alfred M. Wellner, PhD, is the highest honor bestowed on a Registrant by the National Register to commemorate numerous and significant contributions to psychology during a distinguished career. The National Register of Health Service Psychologists is the largest credentialing organization for psychologists. Established in 1974, the independent nonprofit organization is dedicated to improving healthcare by identifying psychologists who meet specific credentialing standards to consumers, healthcare organizations, and regulatory bodies.

Kenneth Slaw (BS '79 Psychology, EDM '83 Education; PhD '87 Education) was named executive director for The Society of Vascular Surgery May 2016. He held key senior staff posts at the American Academy of Pediatrics (AAP) for the past 28 years, and most recently, served as the AAP's director of membership and director of strategic planning. Slaw received the 2013 LAS Alumni Humanitarian Award in recognition of his work with AAP and his involvement with numerous volunteer organizations that help support children and families facing life changing health care issues.

2000s

Lindsay Anderson (BS '01) was appointed as executive director for governmental relations for the University of Illinois. She assumed her new role on March 1, 2016, leading efforts to advocate for the University's interests with federal, state and local officials and key higher education associations.

2010s

Molly Hamilton (BS '13) is a Human Resources Assistant at Cintas Corporation in Bedford Park, IL.

Regina Hinders (BS '14) graduated with a double major in Spanish and Psychology. She will be an English teaching assistant in Mexico this fall as part of the Fulbright Student Program. She has worked as a Spanish tutor, substitute teacher at Central High School in Champaign, IL, and as an English teaching assistant in Barcelona, Spain. Hinders seeks to utilize her social justice involvement and artistic abilities to further connect with individuals while in Mexico. After teaching under the Fulbright, Hinders hopes to pursue a career teaching Spanish at the high school level. ♦

Bronze Medal for Alumna

Congratulations to **Amanda McGrory (BS '10)** for winning a bronze medal in the 5000 meter race in Rio and to her teammates, Tatyana McFadden and Chelsea McClammer, who won gold and silver medals in the same race. For more information about Amanda visit go.las.illinois.edu/mcgrory10 ♦

Paralympic medalists: L-R: Chelsea McClammer, Tatyana McFadden, and Amanda McGrory. (Photo courtesy of the United States Olympic Committee.)



Psychology alumni at the 2016 Homecoming Event



Back Row L-R: Loren Kuzuhara, Larry Ackerman, Jeff Wilson, John Pieroth, Elizabeth Pieroth; Front Row L-R: Matthew & Sean Pieroth



L-R: Loren Kuzuhara, Jean Driscoll, & Carrie Grady



Elizabeth Pieroth & family



Psychology Leader Adonis Holmes

CONNECT WITH US



Become a Psychology FACEBOOK Fan

Find us at "University of Illinois Psychology Department" and keep up-to-date on important news and events.



Network on LINKEDIN

Join Psychology's alumni networking group "University of Illinois Department of Psychology Networking" and expand your professional network.

Psychology E-Newsletter

You can find a link to the E-newsletter at: www.psychology.illinois.edu/enewsletter. Let us know if you would like to be added to our email list at: psych-alumni@mx.illinois.edu.

Update Your Information

Update us on your latest news and current email address at: www.psychology.illinois.edu/alumni

Diversity in Psychology

The members of the University of Illinois at Urbana-Champaign Department of Psychology are committed to fostering and supporting a climate of inclusion, celebrating human diversity in all its forms, and engaging in cutting edge diversity science. For more information about diversity research in psychology, diversity awards, and campus resources visit: www.psychology.illinois.edu/about/diversity



DEPARTMENT OF PSYCHOLOGY

University of Illinois at Urbana-Champaign
College of Liberal Arts & Sciences
603 E. Daniel Street
Champaign, IL 61820

Nonprofit Org.
U.S. Postage
PAID
Permit #75
Champaign, IL



Invest in the Future of the Department

The Department of Psychology benefits from the generosity of friends, like you, who share in our commitment to excellence in the liberal arts and sciences. With your support, we will continue to transform the lives of our students. For more information visit: psychology.illinois.edu/giving

Please indicate the Psychology fund(s) you wish to support:

- Partnership for Psychology Fund (333468)
 - Shape the Future Today Fund (336697)
 - Dr. William Greenough Memorial Fund (774289)
 - James H. Davis Fellowship Fund (772032)
 - Charles L. Hulin Fellowship Fund (776901)
- \$1,000 \$500 \$250
 \$100 \$50 Other \$ _____

I/we wish to pay by:

- Check (made payable to the *University of Illinois Foundation*)
- Please charge my gift of \$_____ to the following credit card:
 - VISA MasterCard American Express Discover
 - Card # _____ CVV # _____ Exp. Date _____
- Credit card billing address if different from the address at right:

- Name as it appears on card: _____
- Signature: _____

Name(s): _____
 Address: _____
 City: _____ State: _____ Zip: _____
 Home Phone: _____
 Email: _____

- This gift is also from: _____
Relationship: _____
- My company will match my gift.
Company name: _____

Please mail this completed form along with your check or credit card information to:

University of Illinois Foundation
PO Box 3429
Champaign, IL 61826-3429

Visit our secure website to make your gift online:
psychology.illinois.edu/giving

Thank you for your gift.

Your tax-deductible gift to Illinois will be processed and receipted by the University of Illinois Foundation.